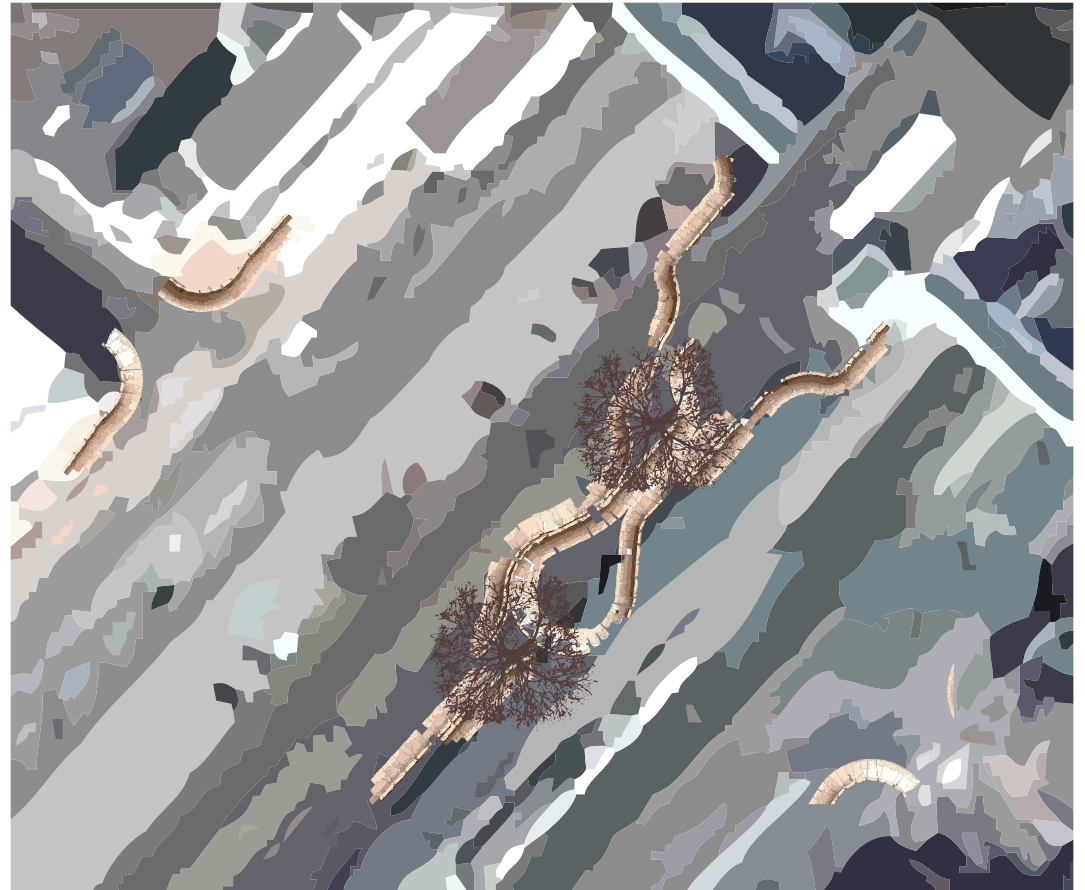


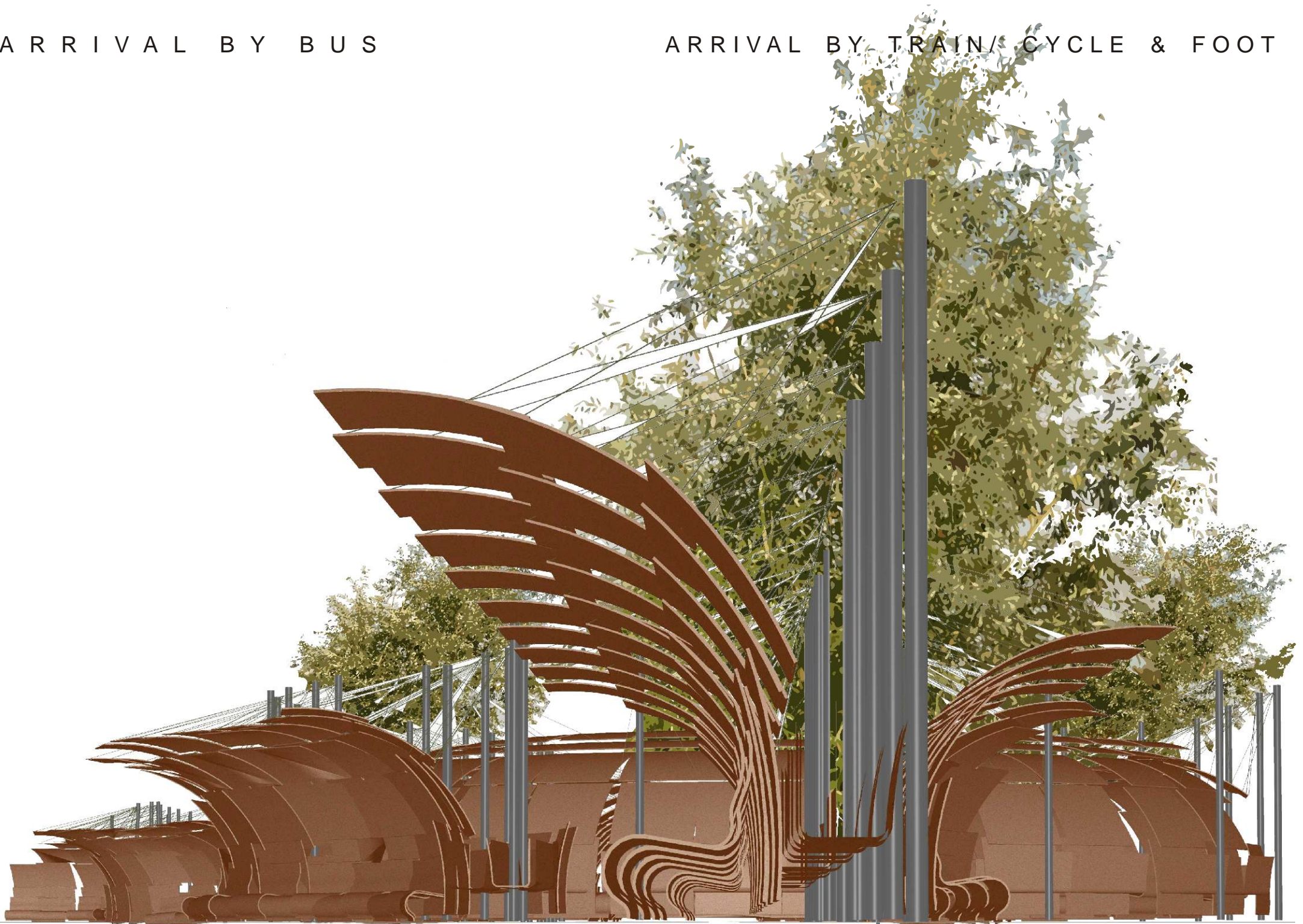


A system of glass reinforced 'tiles' are used not only to provide seating & shelter, but also to describe voids in the urban landscape, as well as protecting a soft-works in an otherwise harsh environment.



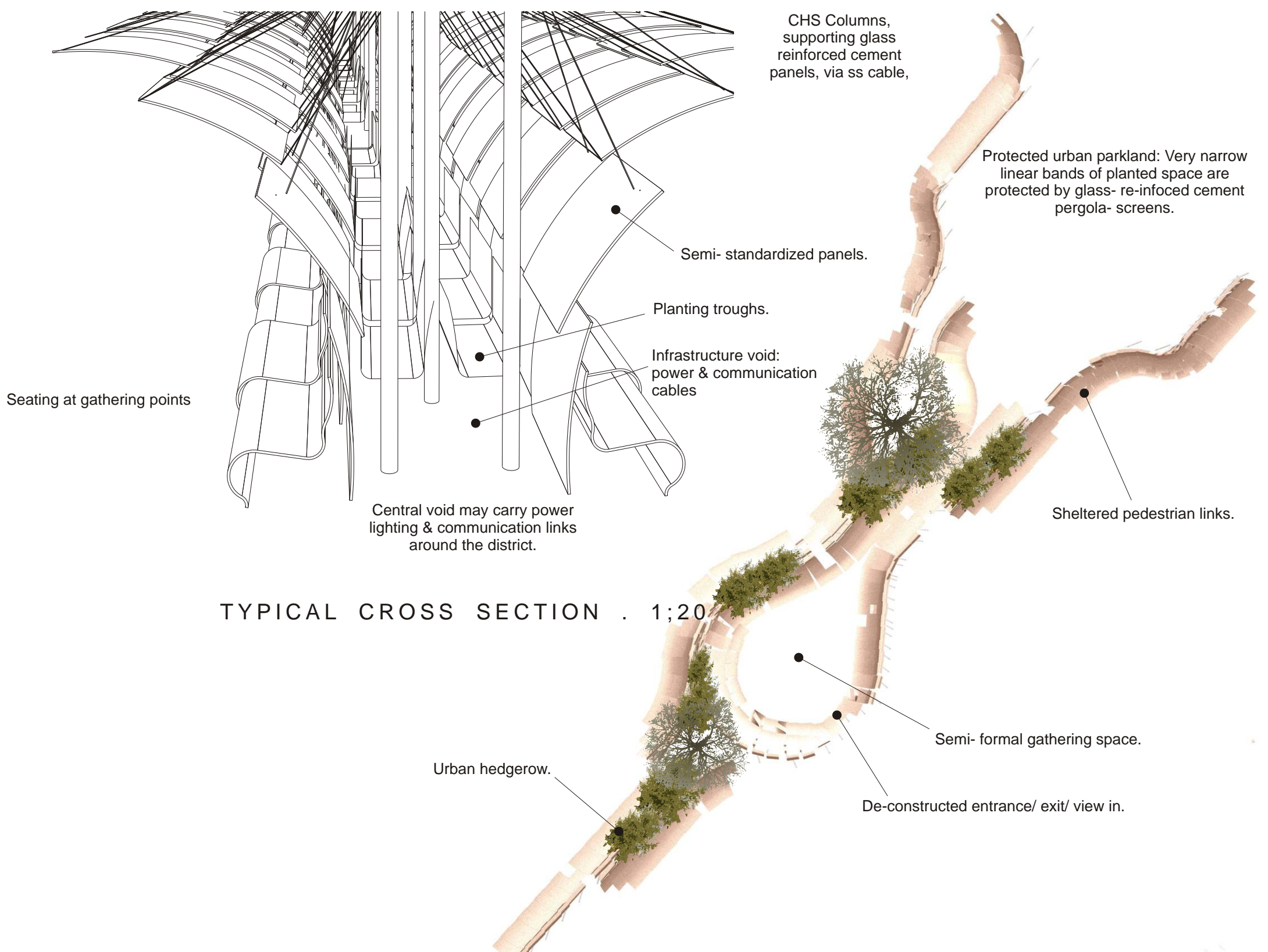
A R R I V A L   B Y   B U S

A R R I V A L   B Y   T R A I N /   C Y C L E   &   F O O T



G E N E R A L   C O N S T R U C T I O N





N E W I N T E R N A L V I S T A

